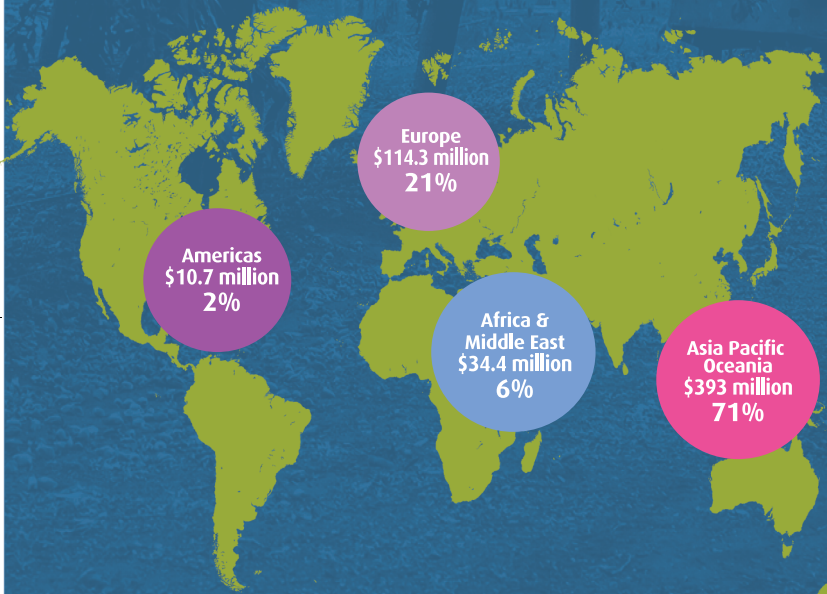


FORMS OF AUSTRALIAN ALMONDS



EXPORT REGIONS (MT) 2018-19



ORCHARD PLANTINGS BY REGION 2018-19

| Region | Percentage | Area (HA) |
|----------------------|------------|-----------|
| SUNRAYSIA (VIC) | 53% | 23,876 HA |
| RIVERINA (NSW) | 24% | 10,665 HA |
| RIVERLAND (SA) | 20% | 9,106 HA |
| SWAN (WA) | 2% | 753 HA |
| ADELAIDE PLAINS (SA) | 1% | 688 HA |

Industry Total
45,088
hectares







KERNEL SIZE & GRADING



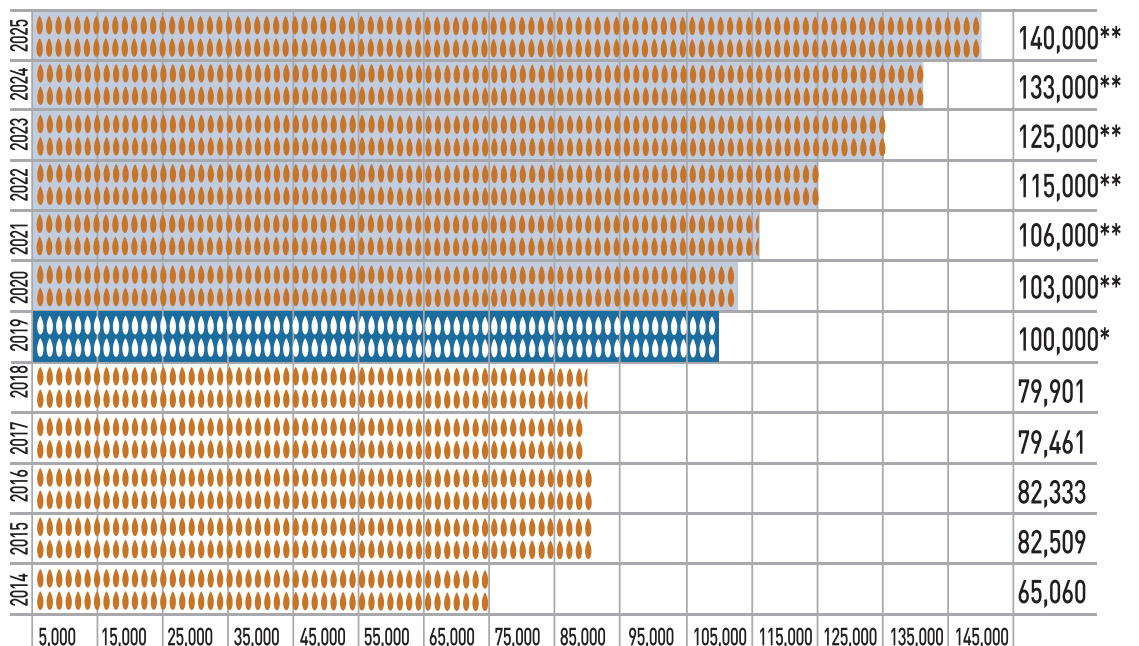
Australian almonds are graded as: Fancy, Extra Supreme, Supreme, Select Sheller Run & Manufacturing.

OUR ALMONDS & PRODUCTION BY VARIETY

-  **NONPAREIL**
50%
39,565 t
-  **CARMEL**
34%
27,172 t
-  **PRICE**
10%
8,145 t
-  **MONTEREY**
2%
1,682 t

2018-19 Total
100,000 tonnes

ALMOND PRODUCTION BY YEAR (KERNEL)



Tonnes * ESTIMATE based on marketers' assessments. ** FORECAST based on plantings data.



AUSTRALIAN ALMOND PROCESSORS AND EXPORTERS



Almondco Australia Ltd

Sturt Highway, PO Box 1744, Renmark, South Australia, 5341

Ph: +61 8 8586 8800 Fax: +61 8 8595 1559

sales@almondco.com.au www.almondco.com.au

Also contact **Food South Australia Japan Office:**

Tim Tanaka: tim@foodsa.com.au



Bright Light Agribusiness Pty Ltd

Unit 7, 435 Williamstown Rd, Port Melbourne, Victoria 3207

Ph: +61 3 9674 8188

sales@brightlightagri.com www.brightlightagri.com



Nut Producers Australia Pty Ltd

249 Wright Street, Adelaide, South Australia, 5000

Ph: +61 8 8231 7011 Fax: +61 8 8231 2177

nuts@nutproducers.com.au www.nutproducers.com.au



Olam Orchards Australia

Level 4/437 St Kilda Road, Melbourne, Victoria, 3004

Ph: +61 3 9868 3400 www.olamonline.com

Olam Europe B.V.

Maarten Stallaert



maarten.stallaert@olamnet.com

Conradstraat 38 - Office D2,

3013 AP

Rotterdam, The Netherlands

Ph: +31 1 0404 4028



SELECT HARVESTS

Select Harvests Ltd

360 Settlement Road, Thomastown, Victoria, 3074

Ph: +61 3 9474 3544 Fax: +61 3 9474 3588

info@selectharvests.com.au www.selectharvests.com.au



ALMOND BOARD OF AUSTRALIA

1801 Bookpurnong Road, PO Box 1507, Loxton SA 5333

Enquiries: admin@australianalmonds.com.au www.australianalmonds.com.au

www.industry.australianalmonds.com.au

